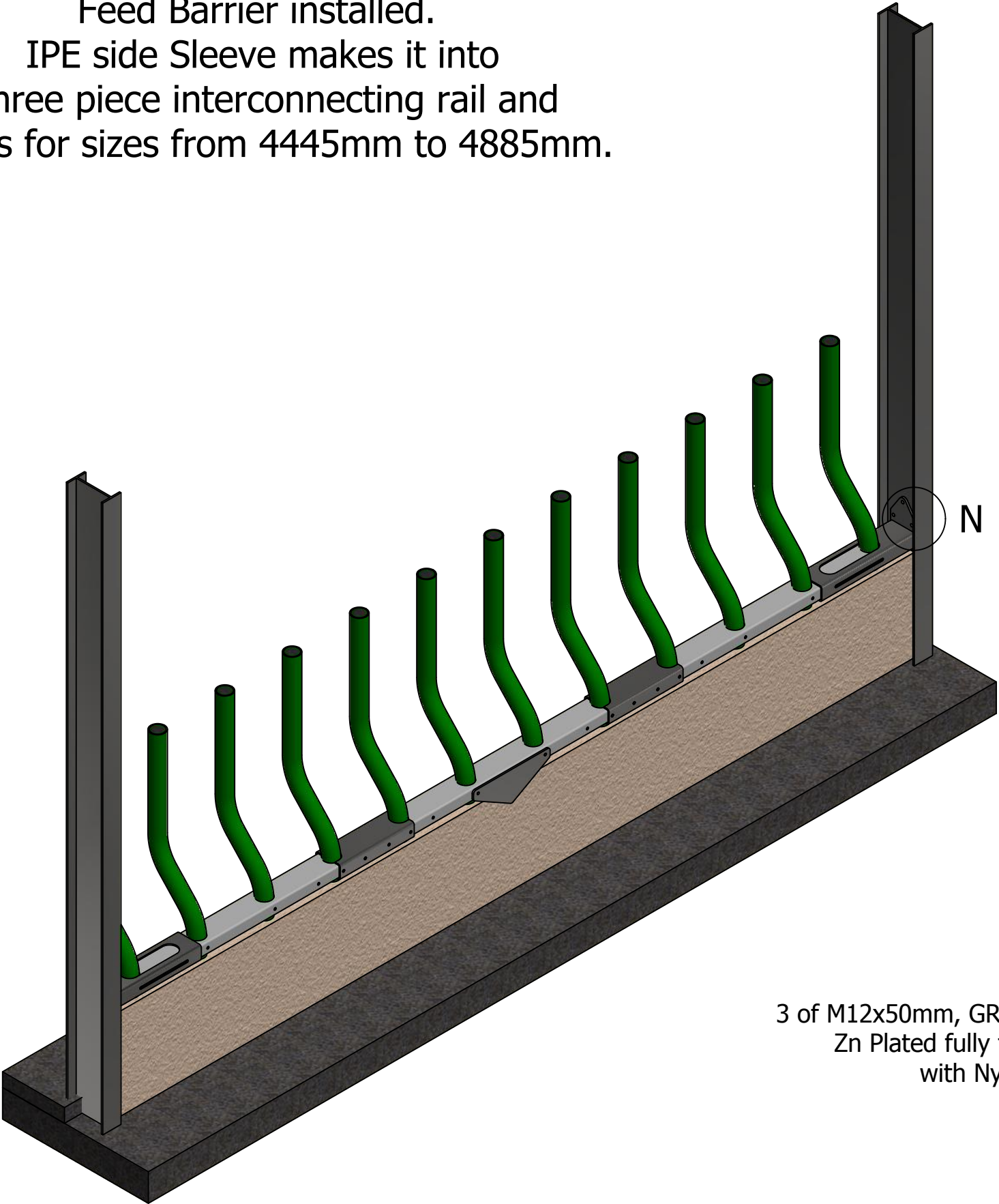
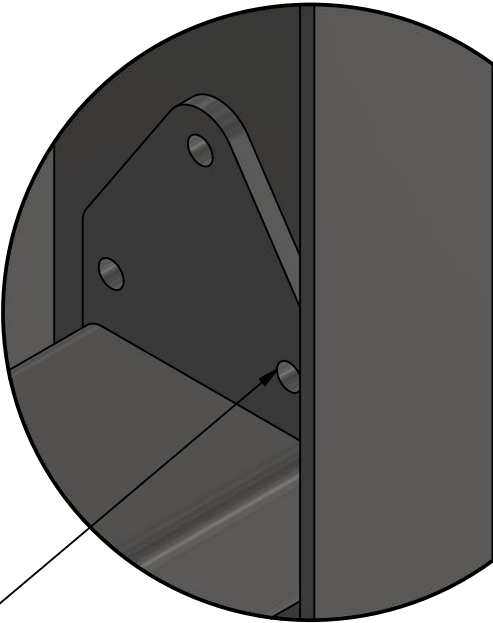


Isometric View (1 : 20)
Feed Barrier installed.
IPE side Sleeve makes it into
three piece interconnecting rail and
allows for sizes from 4445mm to 4885mm.



3 of M12x50mm, GR10.0 HT,
Zn Plated fully threaded
with Nyloc nuts.

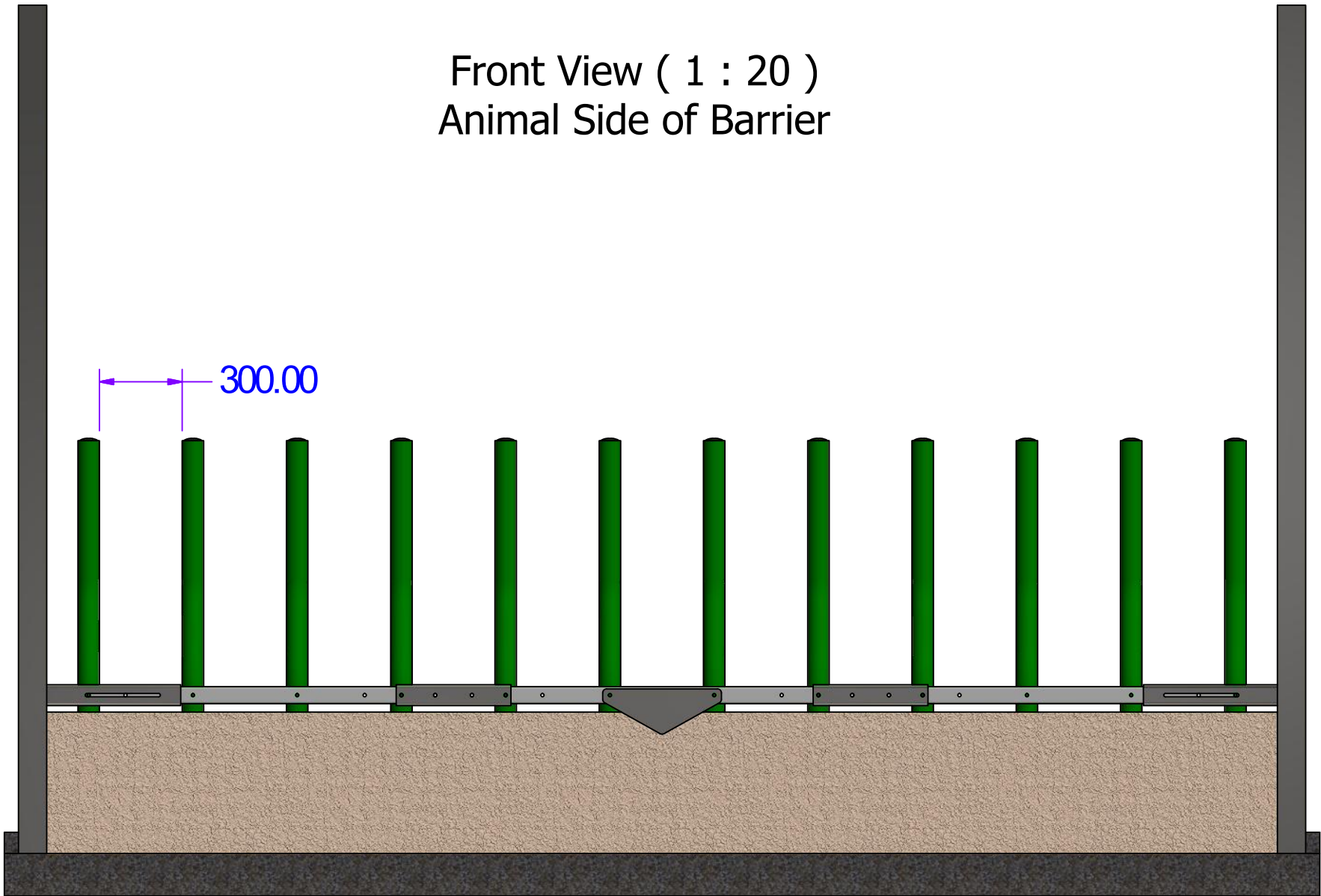
N (1 : 3)



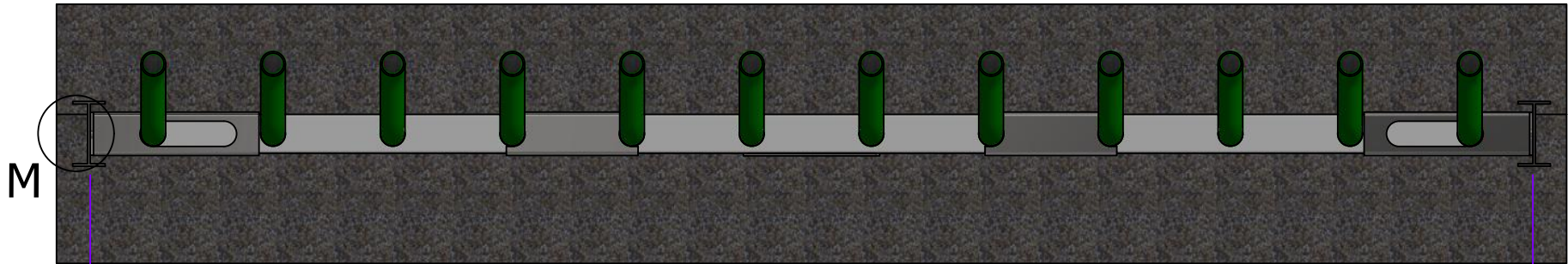
A3 Sheet	
QUANTITY	PART NO
	EF 4500 1500 Feed Rail
ALL DIMENSIONS ARE IN METRIC mm	
TOLERANCE	
DWG NO;	REV A02
1 of 10	

COMPANY; **EASYFIX**
DRAWN; Karl O'Mahony
CONTACT; Michael Earls
DATE; 24/08/2018

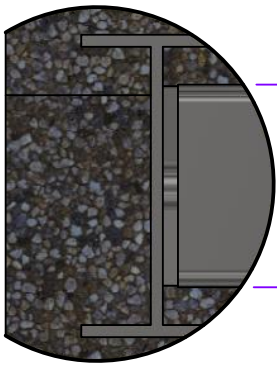
Front View (1 : 20)
Animal Side of Barrier



Plan View (1 : 20)



M (1 : 5)



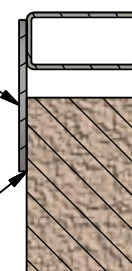
135.00 minimum
flat surface to bolt
10mm backing plate
to IPE

Feed Barrier can be shortened to fit a minimum opening distance of 4445mm
and a maximum opening distance of 4885mm.

A3 Sheet	
QUANTITY	PART NO
	EF 4500 1500 Feed Rail
ALL DIMENSIONS ARE IN METRIC mm	
TOLERANCE	
DWG NO;	REV A02
2 of 10	

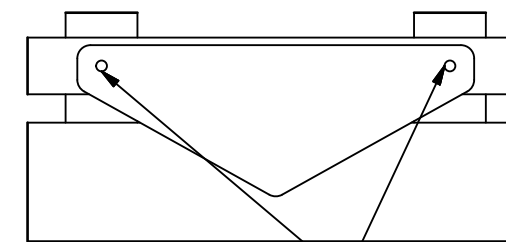
8mm Center Stop plate should be fitted in centre of feedrail on animal side and must be in direct contact with the feed face wall or panel.

U-U (1 : 8)



Feed Face wall or panel.

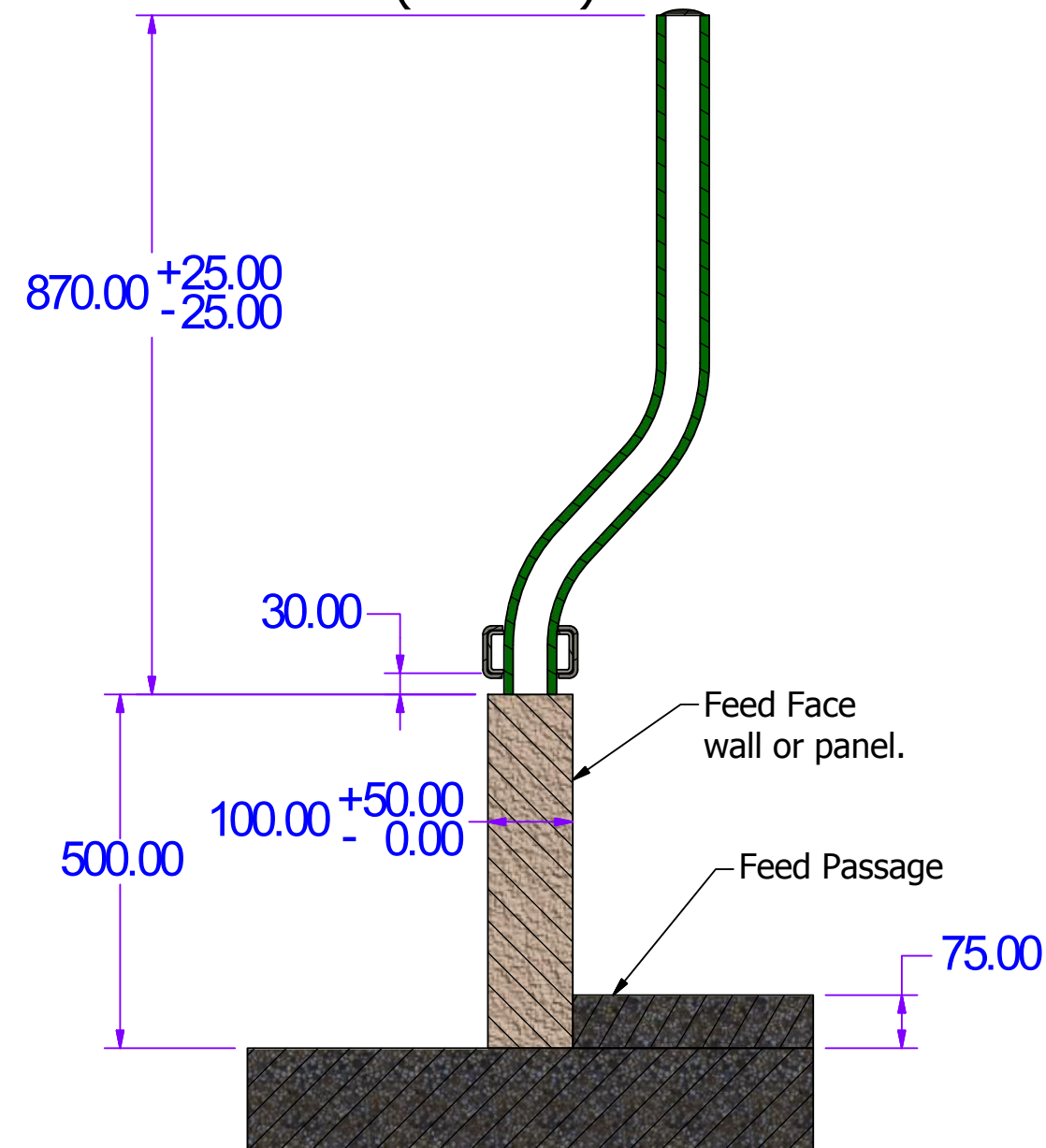
8mm Center Stop plate (1 : 8)



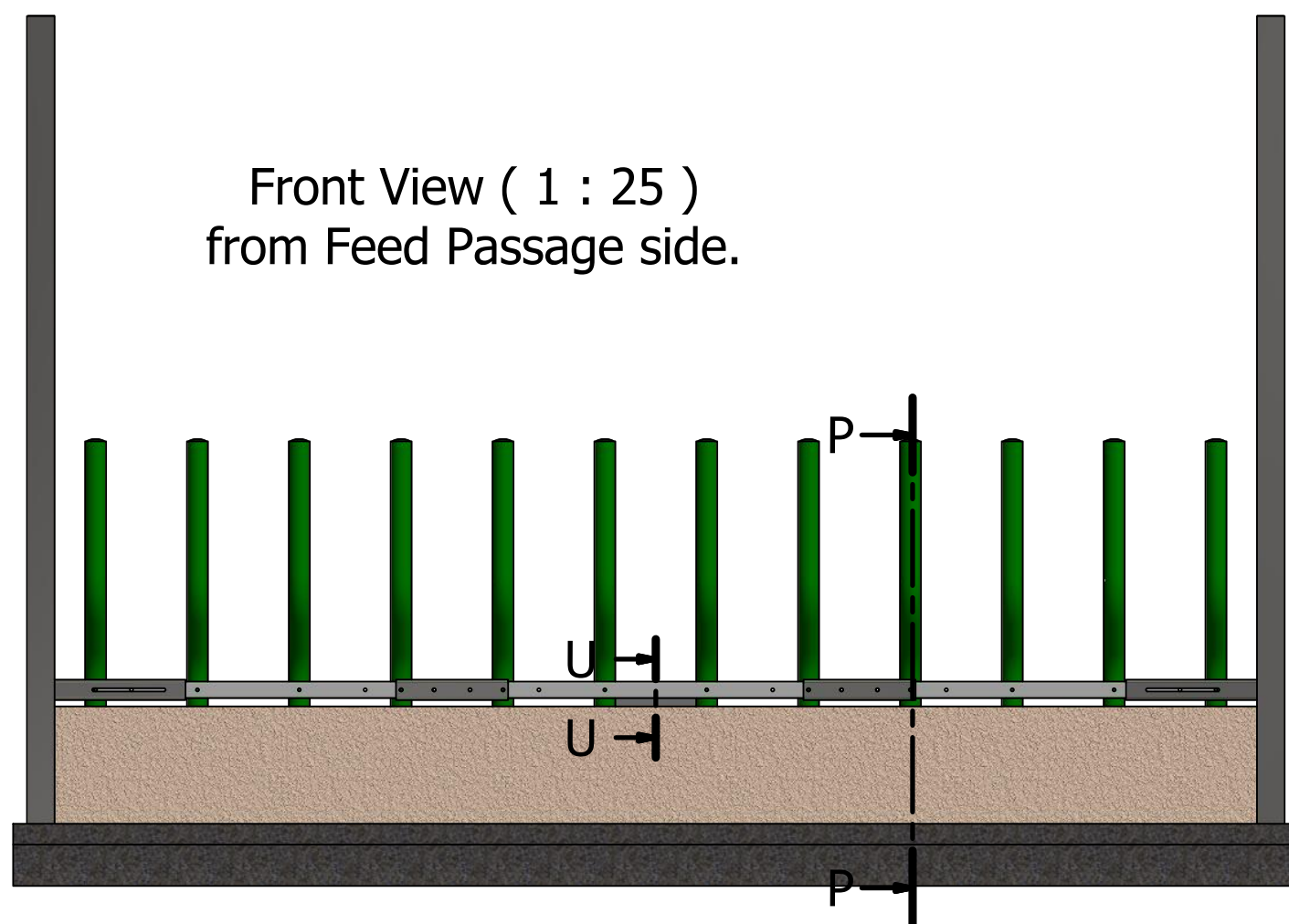
2 x M10x150mm Bolts hold 8mm center stop plate and plastic pipes in place.

If there is a gap here it must be packed out with suitably hard and flat material so that the packing material is fixed to the feed face wall or panel and comes in direct contact with the 8mm center stop plate.

P-P (1 : 10)



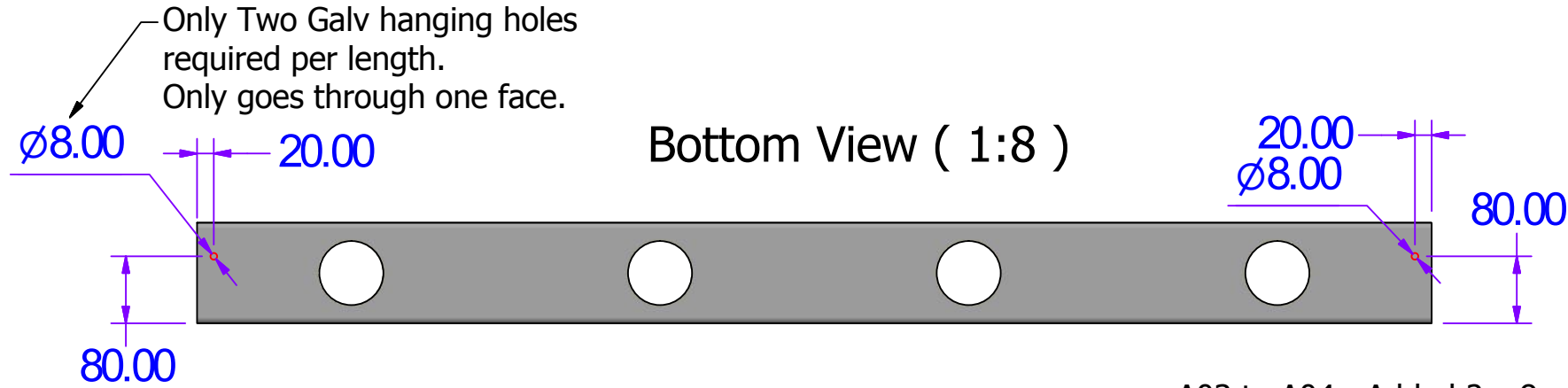
Front View (1 : 25)
from Feed Passage side.



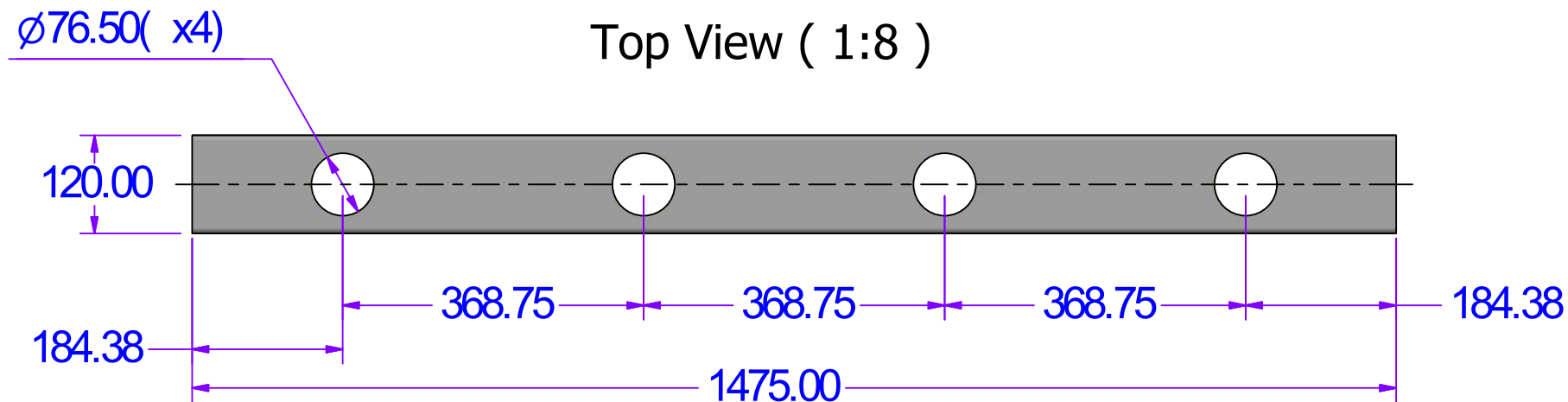
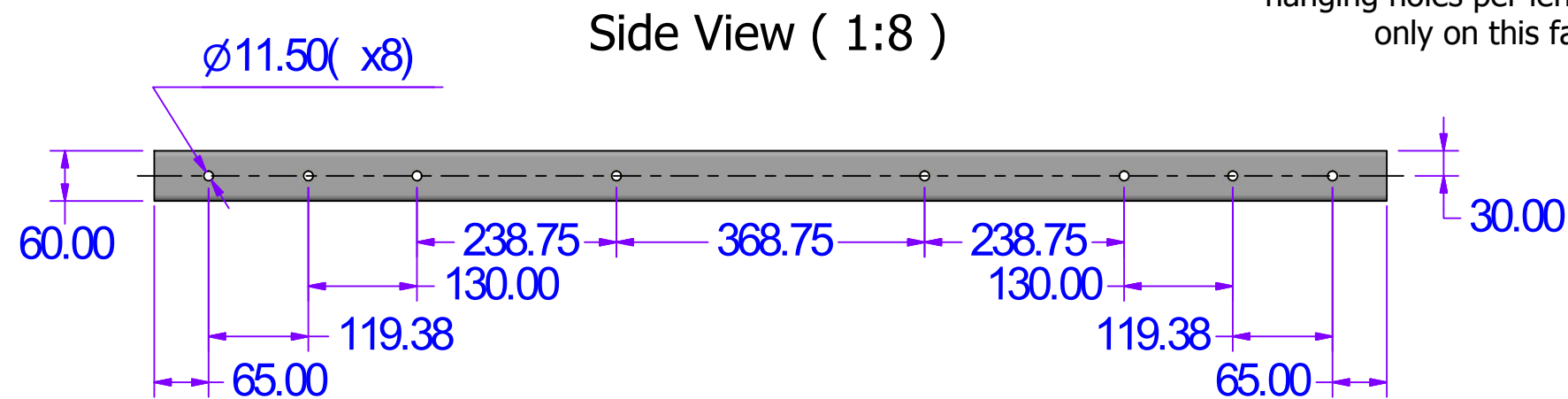
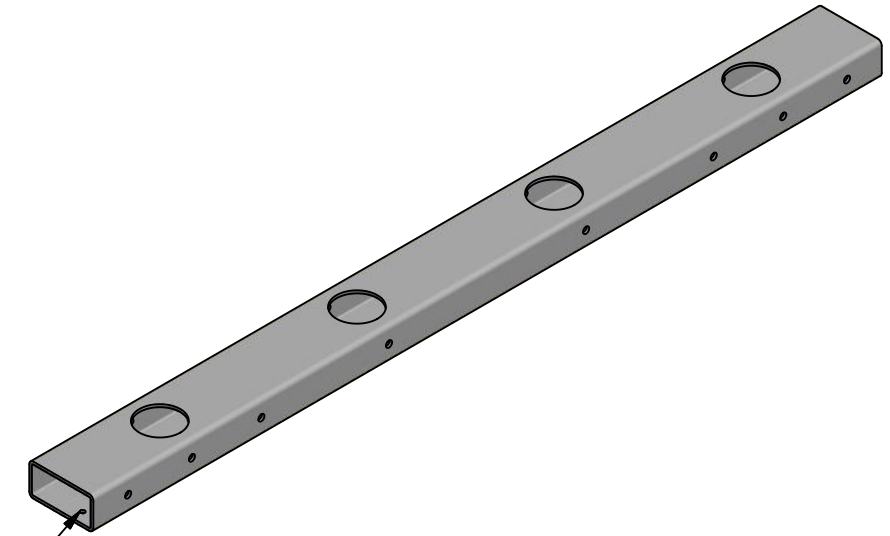
A3 Sheet	
QUANTITY	PART NO
	EF 4500 1500 Feed Rail
ALL DIMENSIONS ARE IN METRIC mm	
TOLERANCE	
DWG NO;	REV A02
3 of 10	

All Holes shown are through holes
unless otherwise stated.

Isometric View of 1500 section (1:10)



A03 to A04 : Added 2 x 8mm Galv
hanging holes per length
only on this face.



End View (1:8)

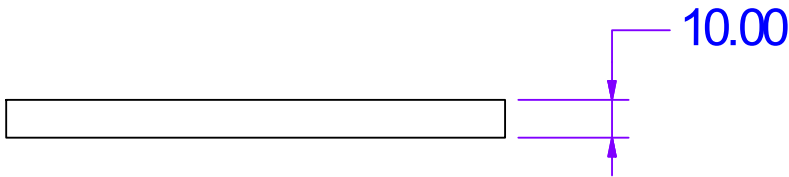


A3 Sheet	
QUANTITY	PART NO
	1500 Section
ALL DIMENSIONS ARE IN METRIC mm	
TOLERANCE	
DWG NO;	REV A04
4 of 10	

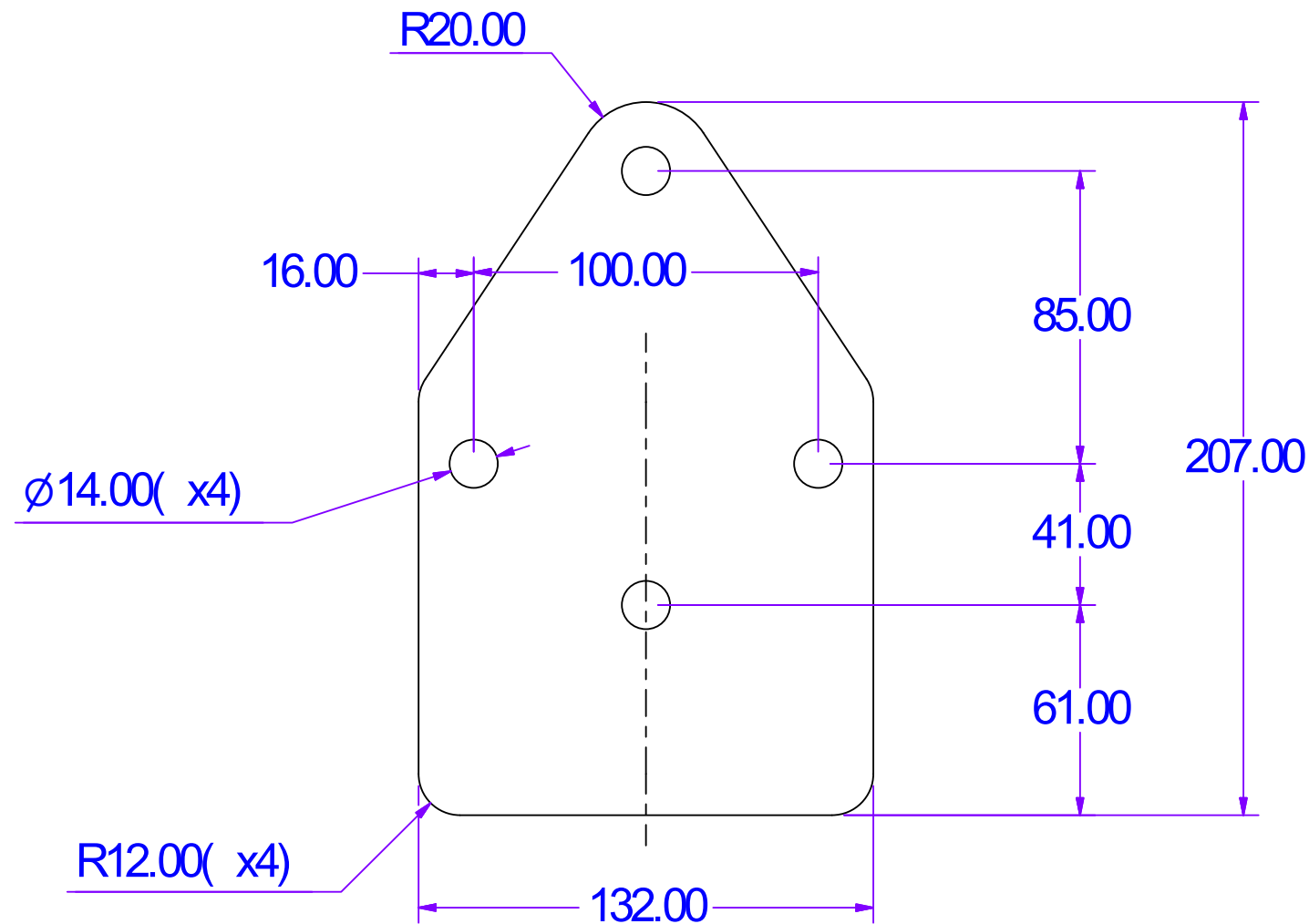
COMPANY; **EASYFIX**
DRAWN; Karl O'Mahony
CONTACT; Michael Earls
DATE; 24/08/2018

All Holes shown are through holes.

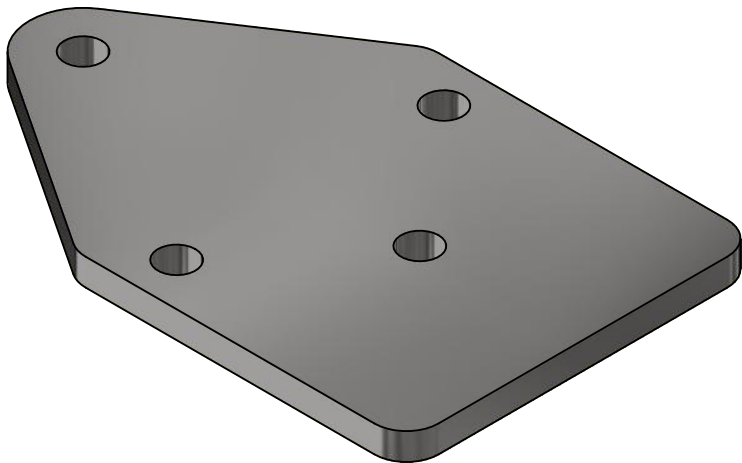
Edge View (1 : 2)



Plan View (1 : 2)



Isometric View of IPE Plate (1 : 2)



A3 Sheet	
QUANTITY	PART NO
	1500 Girder Plate
ALL DIMENSIONS ARE IN METRIC mm	
TOLERANCE	
DWG NO;	REV A02
5 of 10	

COMPANY; **EASYFIX**

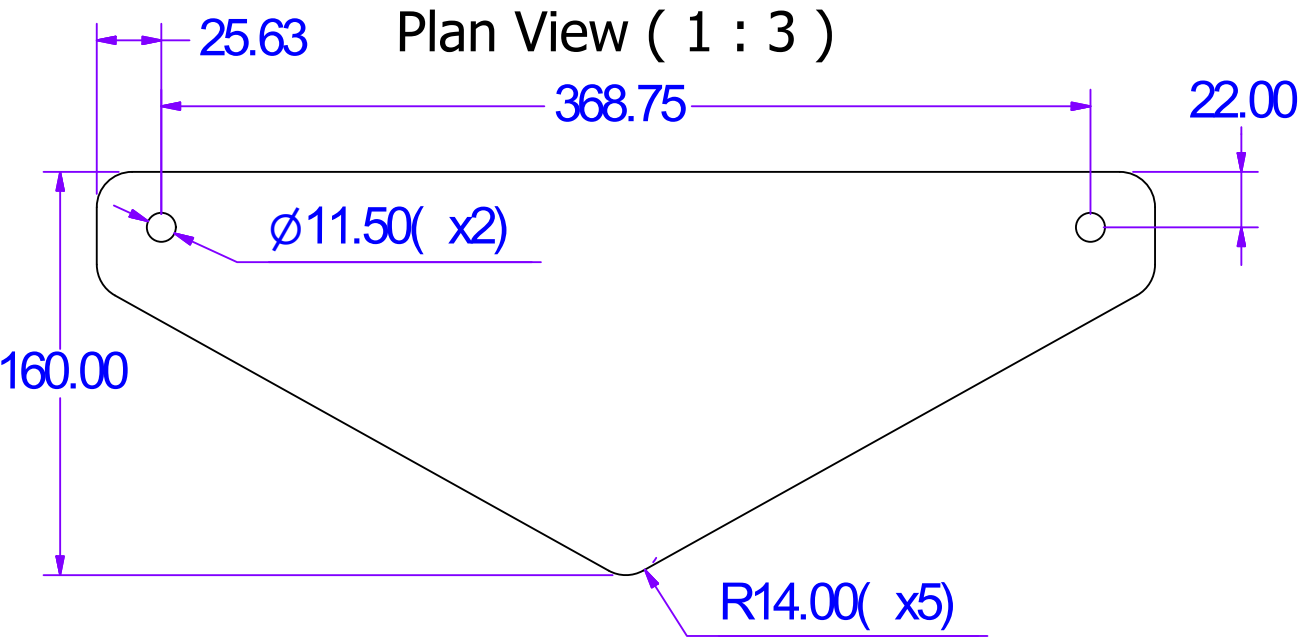
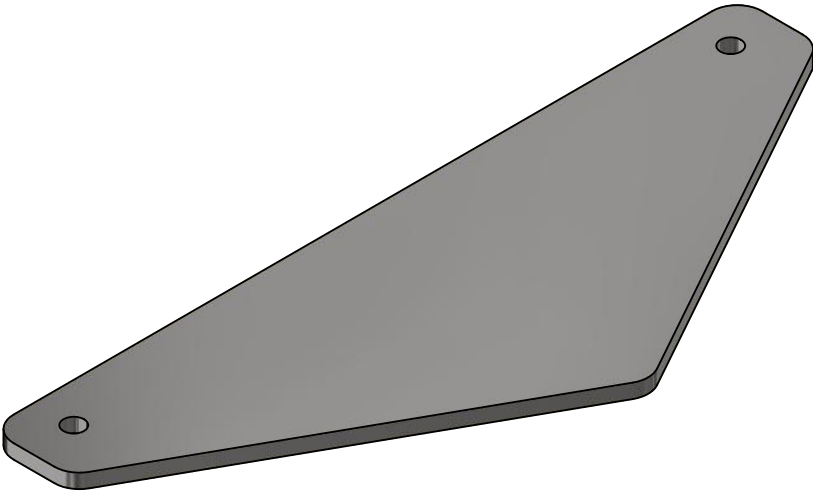
DRAWN; Karl O'Mahony

CONTACT; Michael Earls

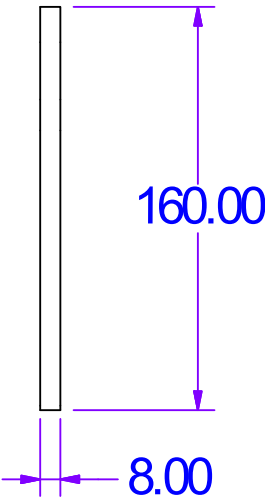
DATE; 24/08/2018

Isometric View (1 : 3)

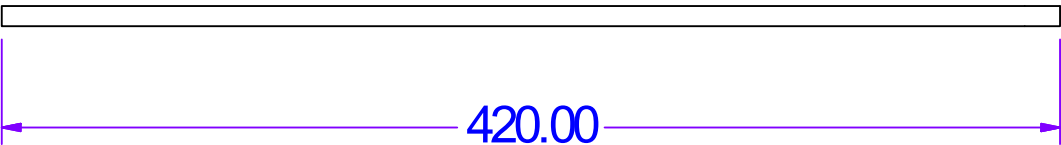
8mm Center Stop Plate



Side View (1 : 3)



Top View (1 : 3)



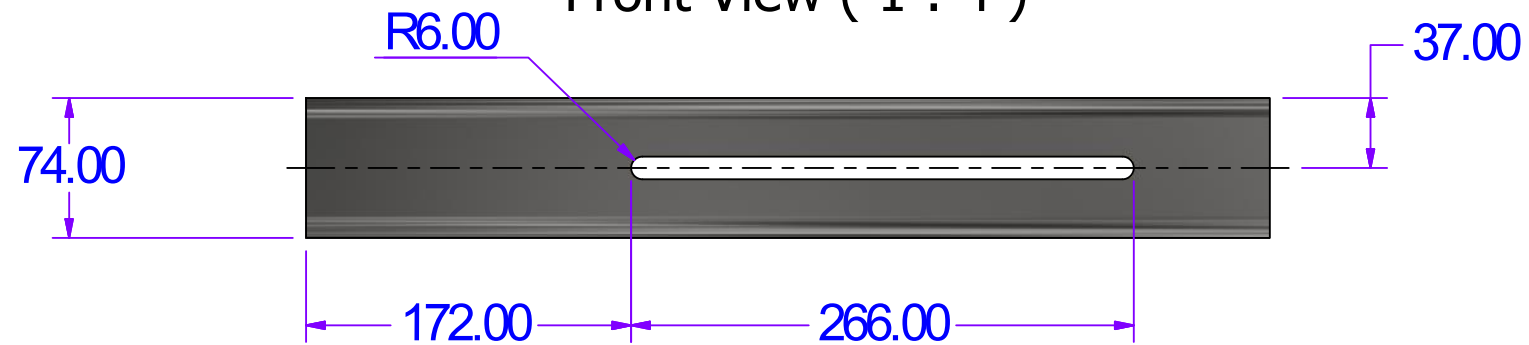
A3 Sheet	
QUANTITY	PART NO
	8mm Center Stop
ALL DIMENSIONS ARE IN METRIC mm	
TOLERANCE	
DWG NO;	REV A02
6 of 10	

Isometric View of Wall Sleeve (1 : 4)

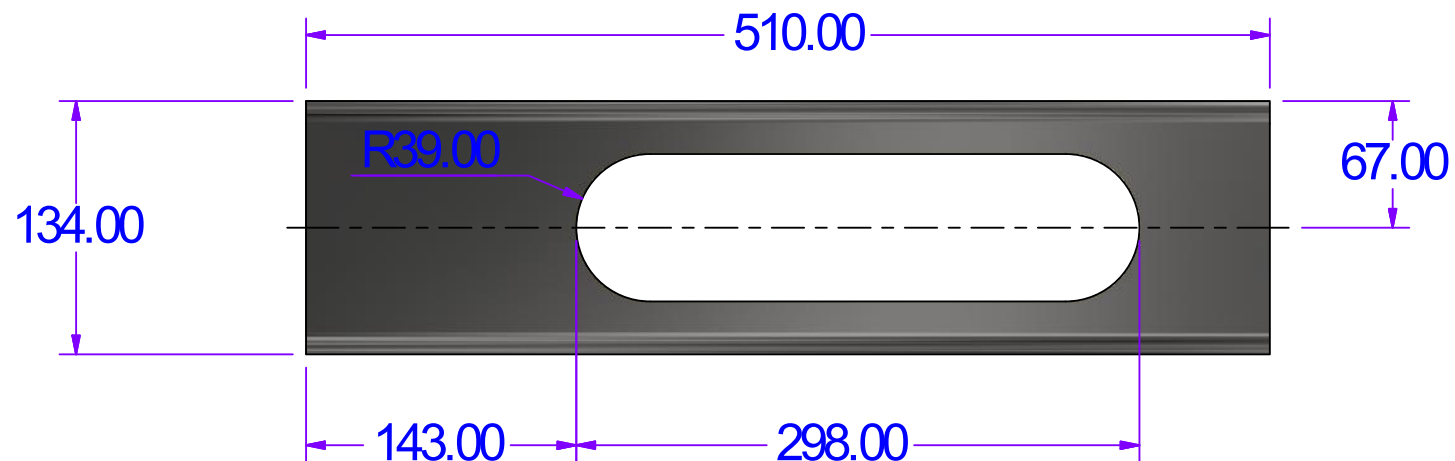


All Holes shown are through holes.

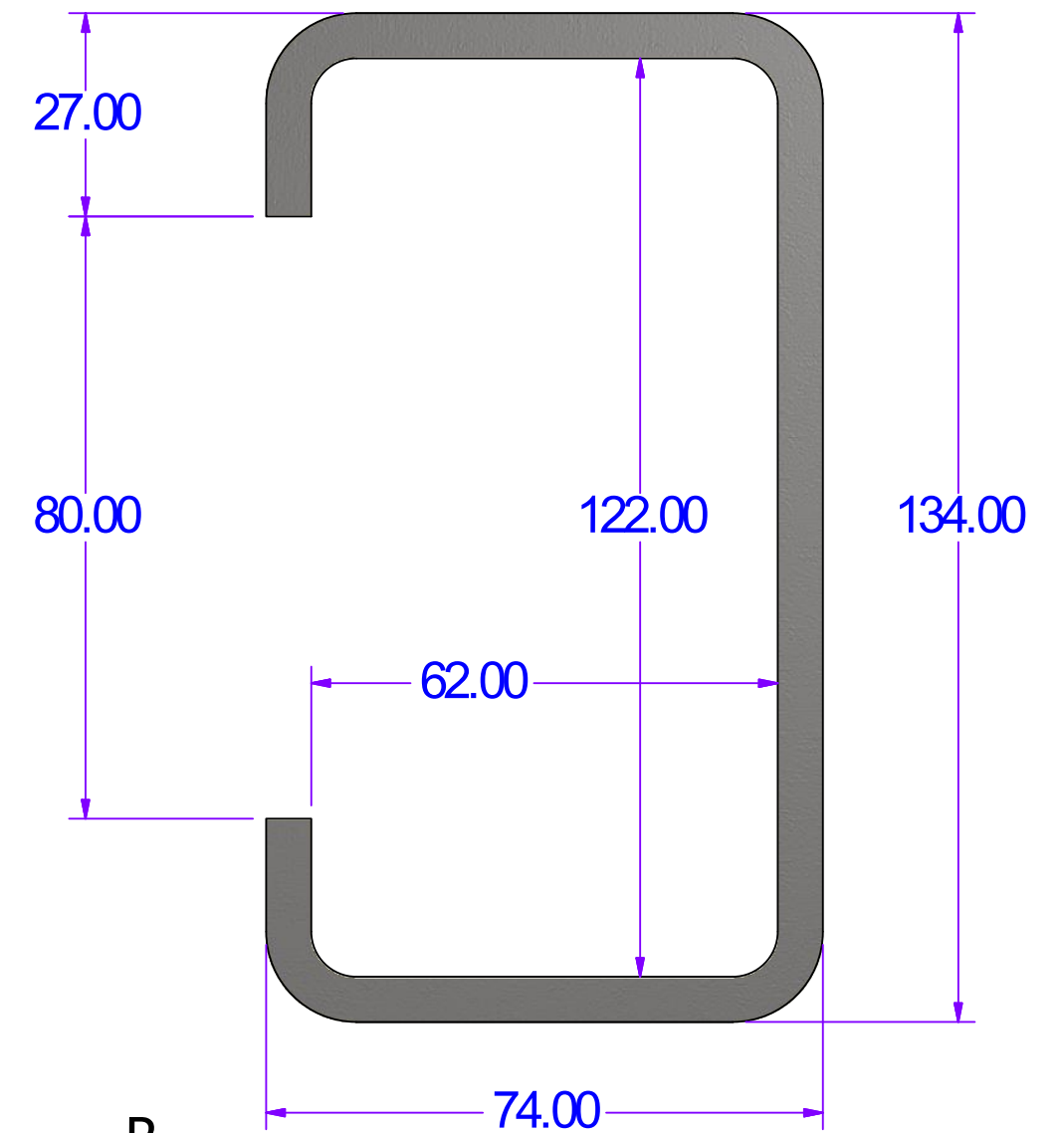
Front View (1 : 4)



Plan View of IPE/Wall Sleeve (1 : 4)

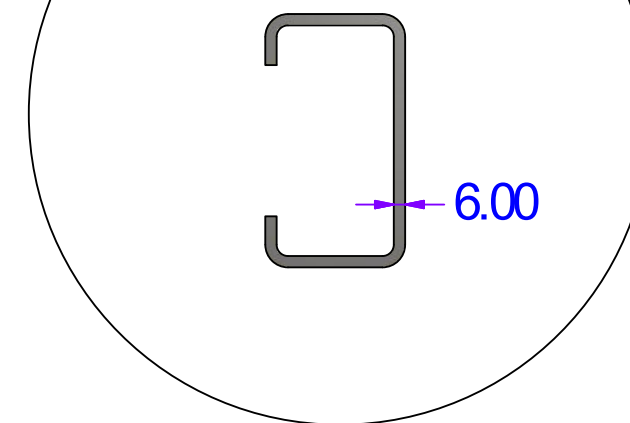


R (1 : 1)



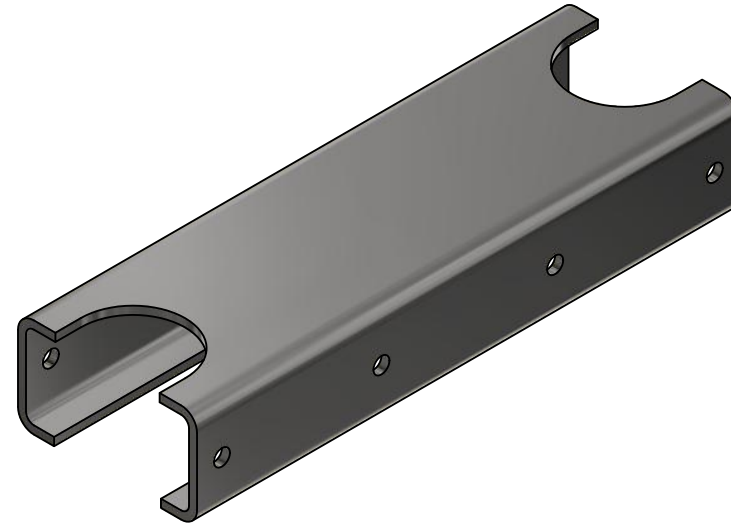
R

End View (1 : 4)



A3 Sheet	
QUANTITY	PART NO
	1500 IPE/Wall Sleeve
ALL DIMENSIONS ARE IN METRIC mm	
TOLERANCE	
DWG NO;	REV A02
7 of 10	

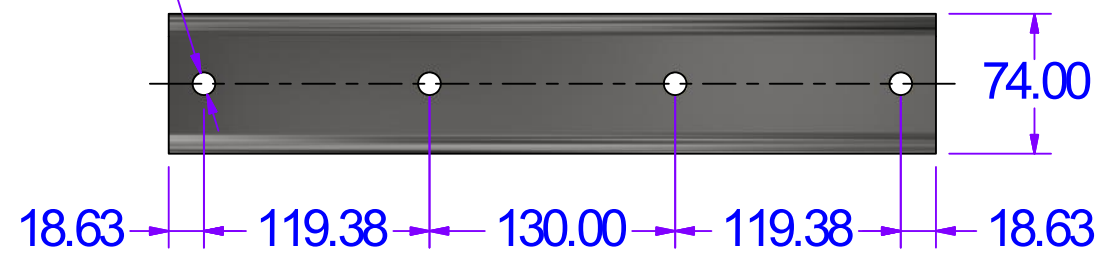
Isometric View of Center Sleeve (1 : 4)



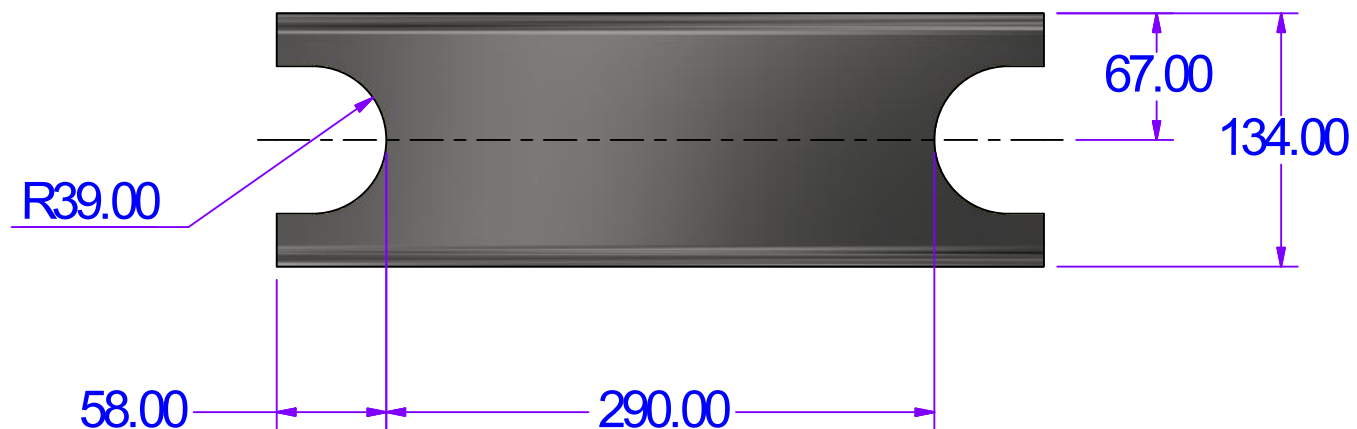
All Holes shown are through holes.

Ø12.00 (x4)

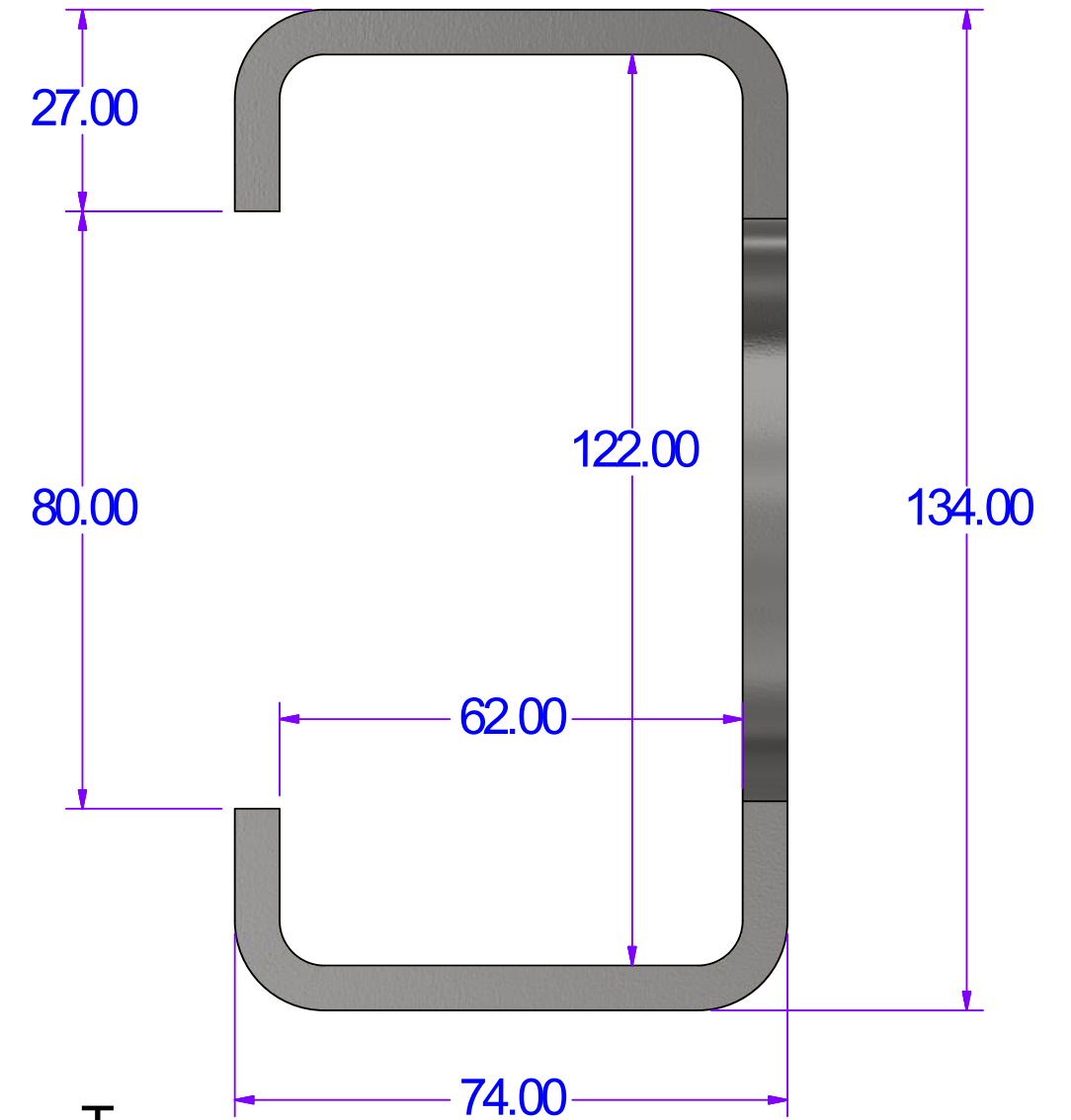
Front View (1 : 4)



Plan View of Center Sleeve (1 : 4)

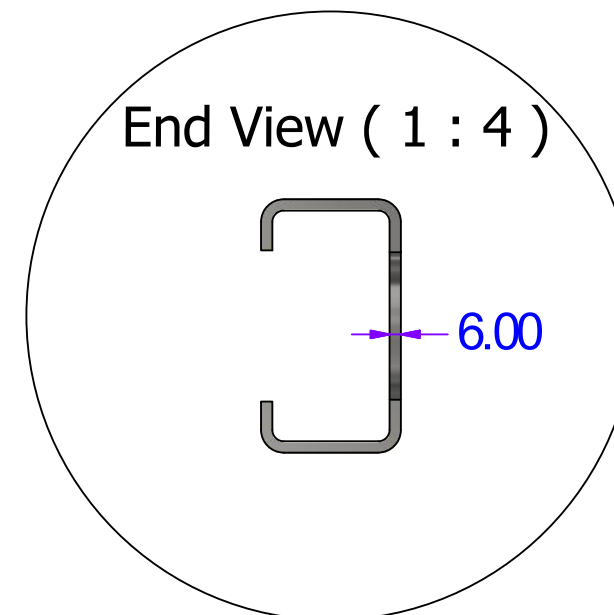


T (1 : 1)



T

End View (1 : 4)



A3 Sheet	
QUANTITY	PART NO
	1500 Center Sleeve
ALL DIMENSIONS ARE IN METRIC mm	
TOLERANCE	
DWG NO;	REV A02
8 of 10	

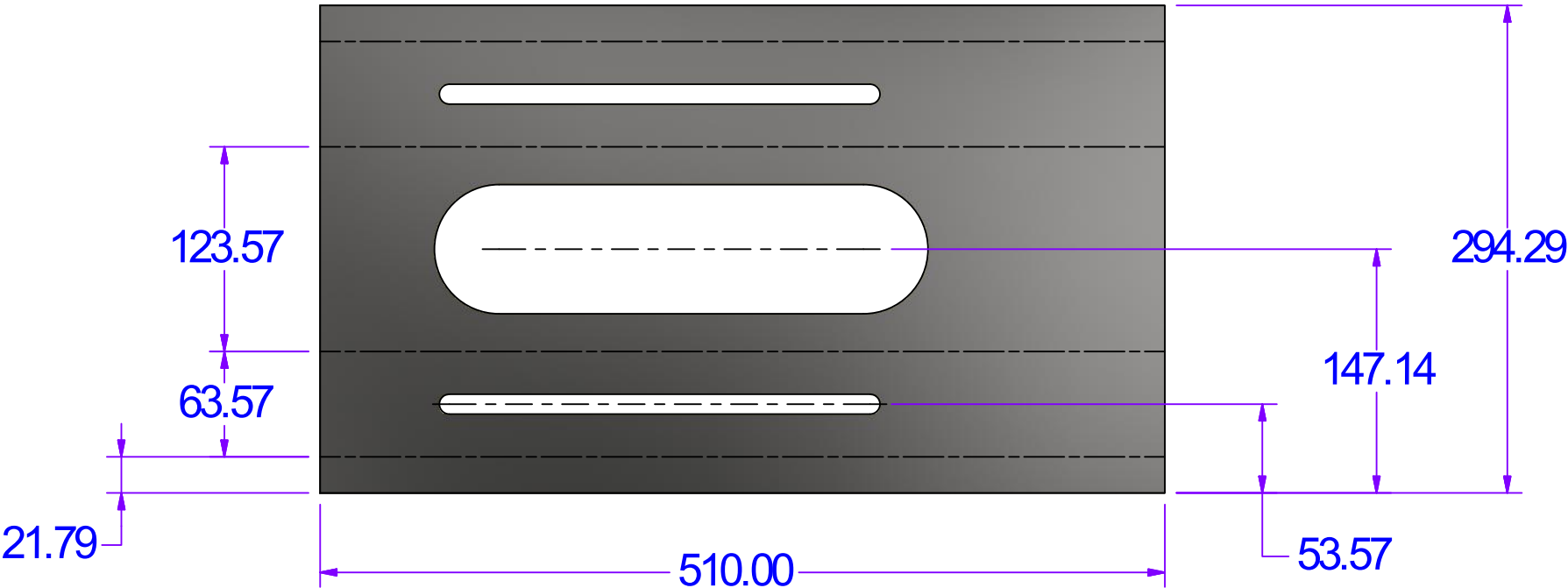
COMPANY; **EASYFIX**

DRAWN; Karl O'Mahony

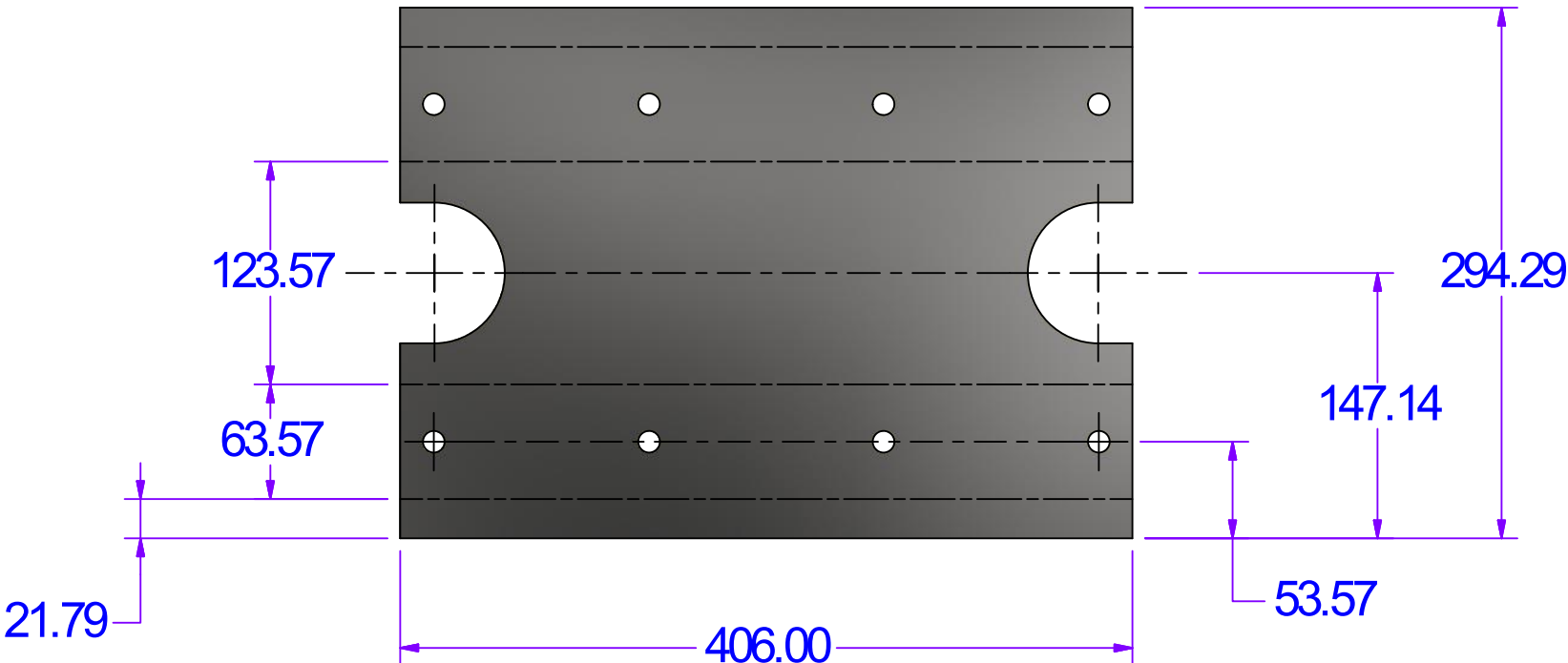
CONTACT; Michael Earls

DATE; 24/08/2018

Sheet Metal Plan View of IPE/Wall Sleeve (1 : 4)
6mm Sheet.

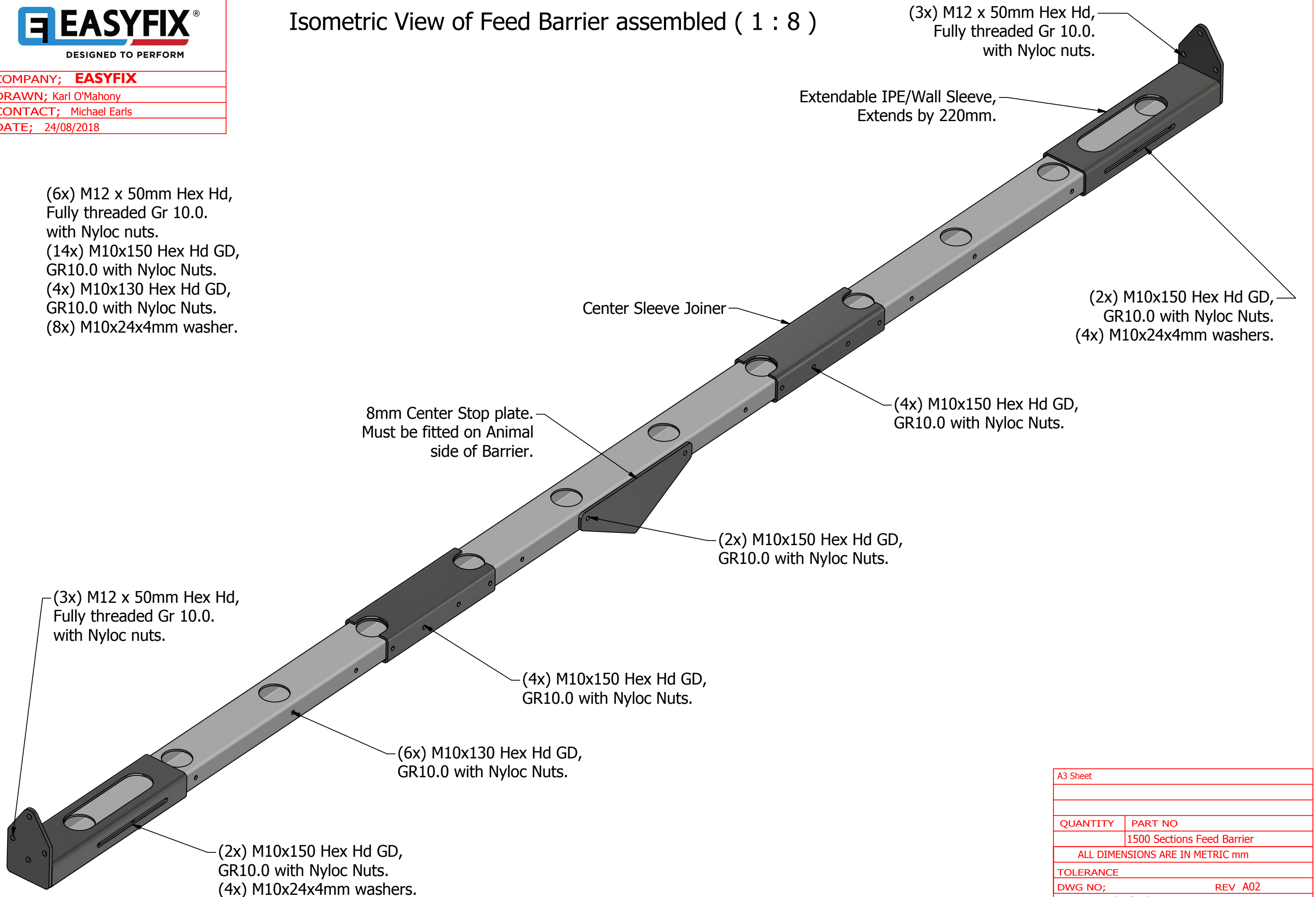


Sheet Metal Plan View of Center Sleeve (1 : 4)
6mm Sheet.



A3 Sheet	
QUANTITY	PART NO
	1500 IPE/Wall Sleeve
ALL DIMENSIONS ARE IN METRIC mm	
TOLERANCE	
DWG NO;	REV A02
9 of 10	

Isometric View of Feed Barrier assembled (1 : 8)



A3 Sheet	
QUANTITY	PART NO
	1500 Sections Feed Barrier
ALL DIMENSIONS ARE IN METRIC mm	
TOLERANCE	
DWG NO;	REV A02
10 of 10	